



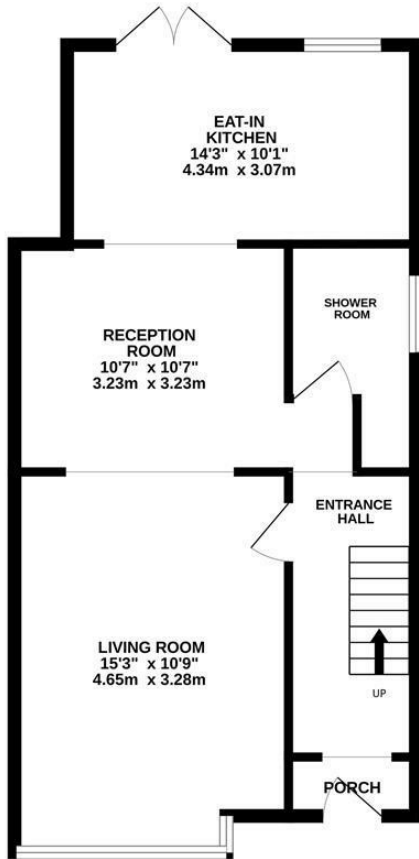
Blacklands Drive, Hastings TN34 2DH

Offers in excess of £375,000

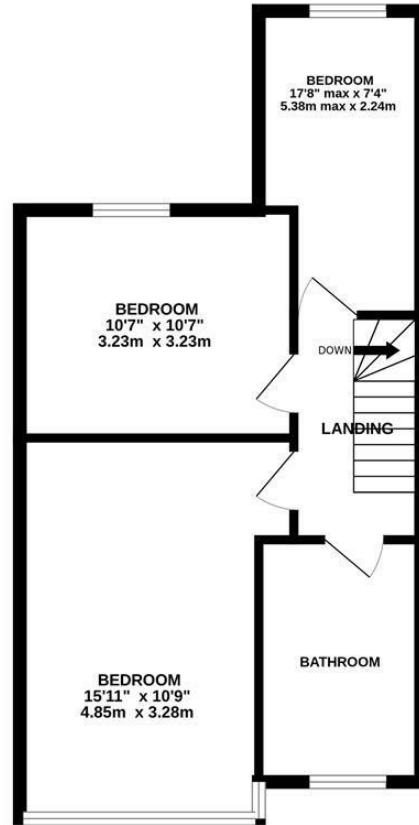


A beautifully presented three bedroom 1930'S FAMILY HOME occupying a sought after Blacklands location, within walking distance to local schools, Alexandra Park and good transport links. The stylish accommodation is arranged as a BAY FRONTED LIVING ROOM with a wood-burning fireplace and BESPOKE STORAGE built-in to the alcoves, there a separate reception area used as a study connecting the living room to the SOUTHERLY FACING EAT-IN KITCHEN which spans the rear of the house. The kitchen is FITTED WITH CONTEMPORARY UNITS providing ample storage and worktop space along with room for a range style oven. The first floor houses three bedrooms, two of which are well proportioned doubles, together with a LUXURY FAMILY BATHROOM complete with a freestanding slipper bath-tub. There is also an additional shower room. Externally THE GARDEN HAS BEEN LANDSCAPED to provide multiple seating areas, there is an area of lawn and the lower level has been finished with artificial grass providing a year-round useable space. At the front of the property there is a DRIVEWAY providing off road parking.

GROUND FLOOR
561 sq.ft. (52.1 sq.m.) approx.



1ST FLOOR
495 sq.ft. (46.0 sq.m.) approx.



TOTAL FLOOR AREA : 1056 sq.ft. (98.1 sq.m.) approx.

Whilst every attempt has been made to ensure the accuracy of the floorplan contained here, measurements of doors, windows, rooms and any other items are approximate and no responsibility is taken for any error, omission or mis-statement. This plan is for illustrative purposes only and should be used as such by any prospective purchaser. The services, systems and appliances shown have not been tested and no guarantee as to their operability or efficiency can be given.
Made with Metropix ©2026

